

Financed by

Organized by



Co-funded by
the European Union



anefore



FORMATION ET
SENSIBILISATION
LUXEMBOURG

Erasmus accreditation in Youth
2020-1-LU01-KA150-YOU-000078080

Training Course

“Transforming Archives into Education,, (TAE)



**6 - 13 May
2026
Esch-sur-Alzette,
Luxembourg**



Financed by

Organized by



Co-funded by
the European Union



anefore



FORMATION ET
SENSIBILISATION
LUXEMBOURG

Project description

The Transforming Archives into Education (TAE) training course aims to empower educators, researchers, and archivists with the skills to effectively use archival materials - printed documents, photographs, and videos - as practical tools for learning. By promoting the interactive approach, this course will help participants transform historical records into engaging educational content that supports critical thinking and deeper historical understanding.

The objectives of the project are:

- **To strengthen formal and non-formal education programs to enhance archival and historical programs, providing young people with tools to understand, preserve, and critically engage with the past.**
- **To enable participants to understand the role of archives as educational resources and tools for social change.**
- **To help participants develop archival literacy by analysing historical narratives, cultural production, and various media formats.**
- **To engage participants in hands-on exploration of archival materials to enhance research and teaching methods.**

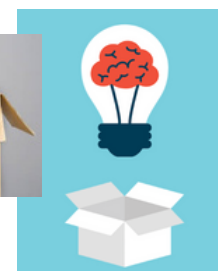


- **To equip participants with strategies to integrate archives into educational programs through innovative and interactive approaches.**
- **To enhance participants' critical thinking by using visual, textual, and multimedia archives to foster analytical discussions.**
- **To familiarise participants with Erasmus+ opportunities for international collaboration, funding, and exchange programs in education and cultural heritage.**

Profile of participants:



The direct beneficiaries of the Transforming Archives into Education (TAE) training course are educators, researchers, and archivists who aim to integrate archival materials into educational practices. Participants should be strongly interested in using historical documents, photographs, and multimedia resources as tools for learning and fostering critical thinking. The ideal candidates should meet the following criteria:



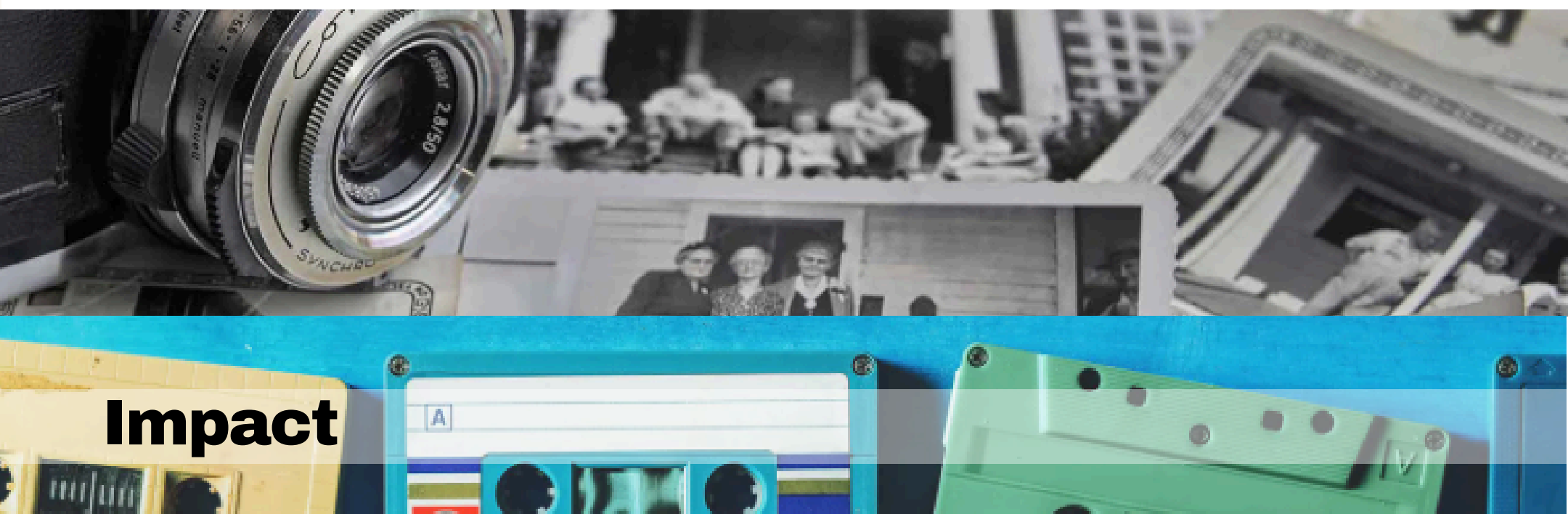
The criteria for selection:

- **Have experience in education, archival work, historical research, or cultural heritage preservation.**
- **Demonstrate motivation to explore innovative ways of using archives in formal and non-formal educational settings.**
- **Possess a strong interest in critical historical analysis, archival literacy, and engaging young people with historical narratives.**
- **Be open to interactive and non-formal learning methods, particularly in archival studies, media literacy, and historical education.**

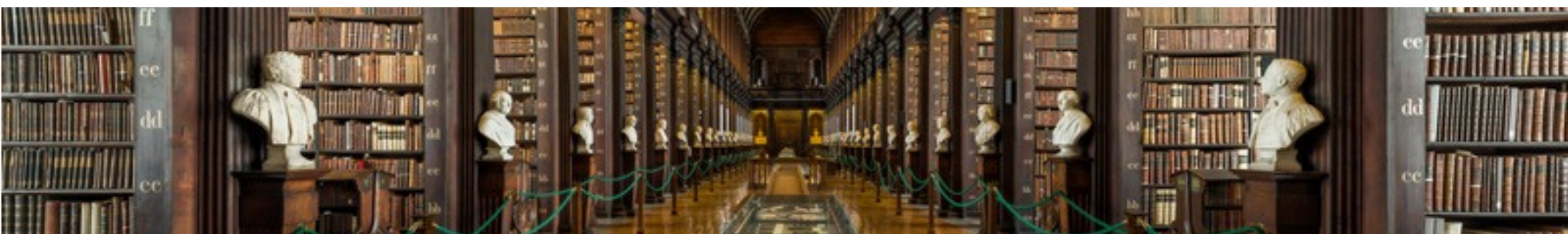


- **Show a commitment to applying the acquired knowledge in their professional practice, whether in teaching, research, or community projects.**
- **Be willing to actively participate in hands-on archival exploration and the development of new educational approaches.**
- **Have a strong dedication to follow-up activities, collaboration, and networking to enhance the project's long-term impact.**

By selecting participants with these backgrounds and interests, the TAE training course will ensure that archival materials are effectively transformed into engaging educational tools that promote historical awareness, analytical thinking, and social change.



The Transforming Archives into Education (TAE) training course will have a lasting impact on participants and the broader educational and archival communities. It will equip educators, researchers, and archivists with innovative approaches to integrating archival materials into learning experiences. The course will foster archival literacy, critical historical analysis, and interactive educational strategies. These skills will ensure that historical records are preserved and actively used as tools for deeper engagement and social awareness.



One of the key impacts will be the collaboration with the Museum of Resistance in Esch-sur-Alzette and the Commune of the City. This partnership will provide participants with experience working with archives related to social movements, historical resistance, and community memory (hopefully, it will also be an example of starting a partnership with their local museums and archives).



By interacting with historical materials, participants will gain firsthand insights into how archives shape narratives and preserve cultural identity. They will also see how archives can serve as catalysts for social change.



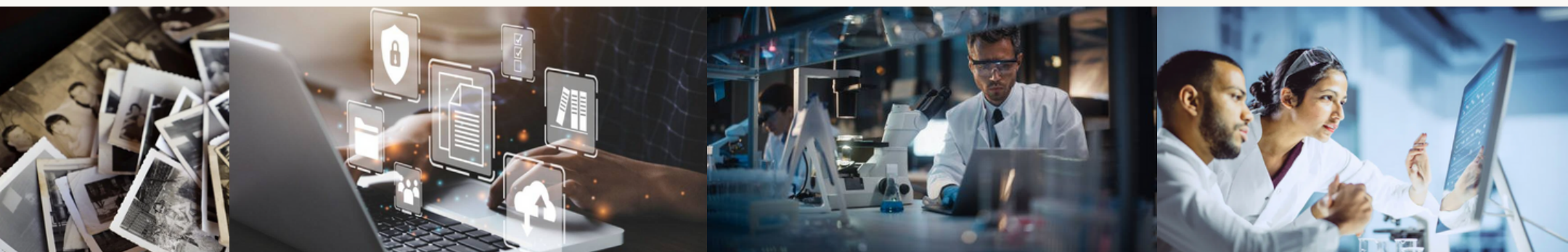
Additionally, the course will help expand access to archives by exploring alternative and radical approaches to archival education. It will draw inspiration from community-based models such as the Interference Archive in New York.



. These approaches emphasise open access, experiential learning, and public engagement. They challenge traditional, restrictive models of archival use. Through this, TAE will empower educators to make archives more accessible and relevant. This is especially important for young learners who may not have previously engaged with historical documents in interactive ways.



By the end of the training, participants will have developed practical methodologies to integrate archives into educational programs. They will create lesson plans, exhibitions, and digital resources that make history more engaging and meaningful. The emphasis on networking and knowledge exchange will ensure that best practices are shared across Europe. This will strengthen the link between cultural heritage institutions and the education sector.



Ultimately, TAE will transform the way archives are perceived and used. It will shift them from passive repositories of information into dynamic learning environments. These spaces will encourage critical thinking, historical awareness, and active participation in preserving and interpreting the past.



Project structure

The project consists of a training course hosted in Esch-sur-Alzette, Luxembourg, on May 6-13, 2026.

Organizer

“Formation et Sensibilisation Luxembourg” Association was registered in 2020 on the basis of the non-formal group “Foreign Students of Luxembourg” (FSL) which was created in 2013. The mission of FSL is to empower young people and to develop societies based on human rights, respect for diversity and a sense of responsibility for social and natural environment.



**FORMATION ET
SENSIBILISATION
LUXEMBOURG**



Travel budget



Travel distance	Green travel	Non-Green travel
10 – 99 km	56 EUR	28 EUR
100 – 499 km	285 EUR	211 EUR
500 – 1999 km	417 EUR	309 EUR
2000 – 2999 km	535 EUR	395 EUR
3000 – 3999 km	785 EUR	580 EUR
4000 – 7999 km	1188 EUR	1188 EUR
8000 km or more	1735 EUR	1735 EUR

Disclaimer!!!

According to the Erasmus+ programme rules, reimbursement is calculated based on the official travel distance between the registered address of the partner organisation and the venue of the event. The reimbursement amount cannot exceed this limit, but it may be lower if the actual distance from the participant's starting point to the venue is shorter. You can find these rules explained in detail in the Erasmus+ Programme Guide 2025



Access/Public Transportation in Luxembourg

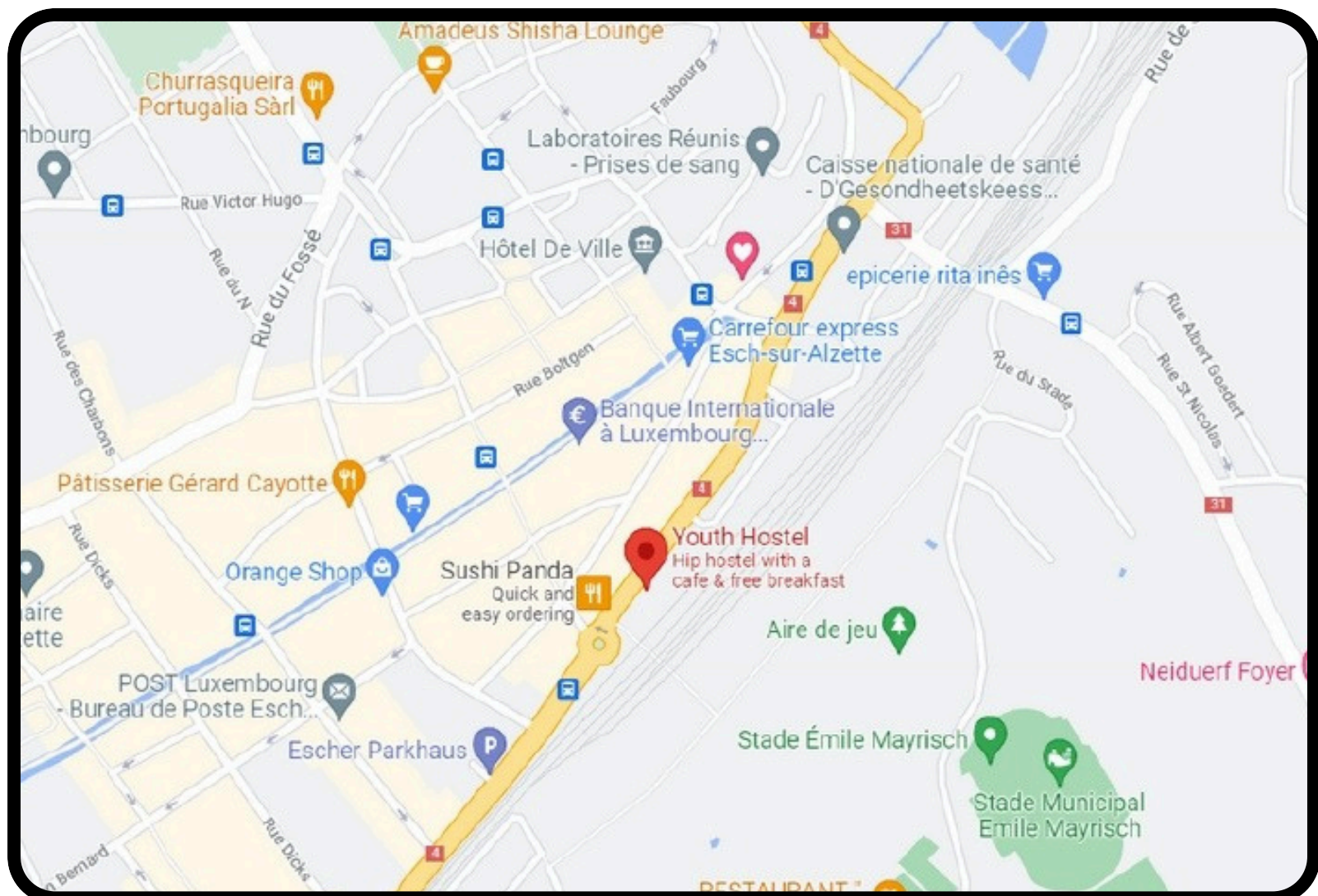
If you arrive by plane, take the bus 29 (direction Gasperich, Guillaume Kroll) or the tram (direction Bonnevoie, Lycée Bouneweg or Gasperich, Stadion) to the bus stop "Luxembourg, Gare Centrale routiere". From Luxembourg Central Station you should take train to Esch/Alzette Gare. As the youth hostel is situated directly next to the Esch/Alzette bus and train station, it is comfortably accessible by public transportation. The train connection from the capital to Esch takes a 24 minutes!



Those arriving by train can get off at the central station and take the train to "Esch/Alzette-Gare".

<https://www.lux-airport.lu/passengers-visiters/from-the-airport/bus-schedule-luxembourg-airport/#01>

More information or timetables for buses to/from the stop 'Esch/Alzette-Gare'.
www.mobiliteit.lu



VENUE: Esch-sur-Alzette city, Luxembourg



Esch-sur-Alzette is the heart of Southern Luxembourg, the so-called Minette region. Long before the Grand Duchy became a global player in the financial sector and the European Union institutions were established, the region was known throughout Europe for iron ore exploitation and processing. While the Minette's industrial heritage remains omnipresent, Esch and its modern Belval district have become popular for students and concertgoers. Several music venues, including the country's largest – the Rockhal – are found here. Grand Duchy of Luxembourg is located in the heart of Europe, bordered by Germany, France and Belgium where you can drive 3 hours to be in Frankfurt, Brussels, and Paris.



The capital, Luxembourg City, is, together with Brussels and Strasbourg, one of the three official capitals of the European Union and the seat of the European Court of Justice, the highest juridical authority in the EU, many European institutions are based in Luxembourg as Luxembourg was a founding member of many European Institutions; and to know that the word (Schengen) that is used for the visas is one of the cities in Luxembourg where the treaty was signed. Luxembourg has 3 official languages: Luxembourgish, French and German. Currency is Euro, public transportation is free for all over Luxembourg.

ACCOMMODATION IN LUXEMBOURG

"YOUTH HOSTEL" in ESCH-SUR-ALZETTE
17, boulevard J.-F. Kennedy L-4170 Esch-sur-Alzette,
Luxembourg
Phone (+352) 26 27 66 450

The new youth hostel is situated right by the train station of Luxembourg's second-largest city. A modern interior offers all necessary amenities, and is suited for people with disabilities (wheelchair access, elevator, adapted toilets and showers). The hostel has WiFi coverage. The towels will not be provided and participants should bring their towels with them.

For more information you can visit the webpage of the hostel:

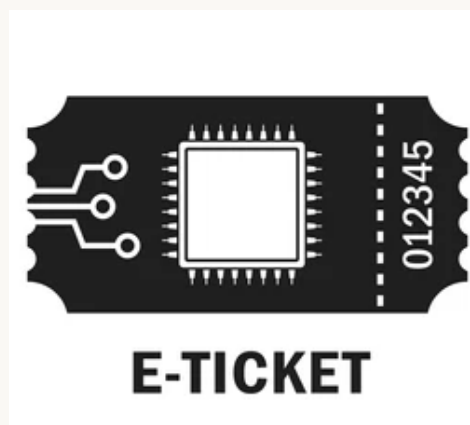
<https://youthhostels.lu/en/youth-hostels/youth-hostel-esch>

The google map link: <https://goo.gl/maps/nkT1bVKUrLZhVoCJA>



Mandatory documents to give to get reimbursed.

1. Booking email from air company (only when booked online);
2. E-ticket or/and receipt/invoice from flights;
3. Electronic tickets and all other original tickets(bus/train) used during your travel to Luxembourg;
4. Boarding passes (Online check-in with PDF documents are preferred).



OTHER COSTS

Food, accommodation and program costs will be provided and fully paid thanks to financial support from Erasmus+ Program granted by Luxembourgish National Agency - Anefore.



PARTICIPATION IN THE PROJECT

You are expected to participate fully in all activities, unless you are ill. **Unauthorized absence from activities and workshops is not permitted.** If less than 80% of the programme is attended, it will not be possible to be reimbursed for the international travel costs.



WHAT TO BRING WITH YOU?

1. Medicines: For preventive reasons we recommend for those who have health problems to bring their own medicines;

2. Charger and loading cables of your e-devices;

3. If you have and consider important to carry with you -a mobile, camera, tablet, laptop etc.

4. Personal hygiene items such as towels, shampoos, gel, toothpaste, etc.

5. International Passport – Please, check the validity of the passports before the departure – it needs to be valid at least for 3 months after your visit to Luxembourg. For non EU citizens you must send us the passport details in order to prepare invitation letters. For the EU citizens traveling from inside the EU a valid ID will be sufficient for traveling.



In case you need more info, please contact: fsluxembourg@gmail.com

+352 691 548 071 -Tatev

+352 691 583 081 - Seg

Important links



Hostel website



Google map address



Public transport



FSL links

Financed by



Co-funded by
the European Union



anefore

Organized by



FORMATION ET
SENSIBILISATION
LUXEMBOURG

Funded by the European Union. Views and opinions expressed are however those of the author(s) only and do not necessarily reflect those of the European Union or the European Education and Culture Executive Agency (EACEA). Neither the European Union nor EACEA can be held responsible for them.



**SEE YOU
SOON**

